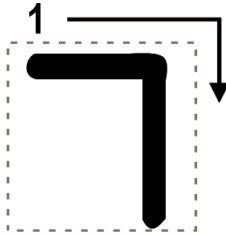


Resh Writing Practice

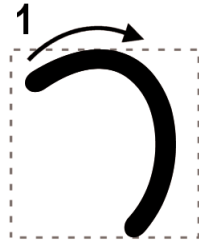
“R” as in rain



Handwriting practice lines for the letter Resh. The first row contains six letters: five hollow outlines for tracing and one solid black letter. The second row contains three hollow outlines for tracing. The third row contains two hollow outlines for tracing. The fourth row contains one hollow outline for tracing. The remaining three rows are empty for independent practice. A vertical pink line is on the right side of the page.

Resh Writing Practice

“R” as in *rain*



Handwriting practice lines for the letter 'R'. The page features four rows of horizontal lines. The first row contains six 'R' characters: five are hollow outlines and the sixth is a solid black letter. The second row contains three hollow 'R' outlines. The third row contains two hollow 'R' outlines. The fourth row contains one hollow 'R' outline. A vertical pink line is positioned on the right side of the page, serving as a margin.